

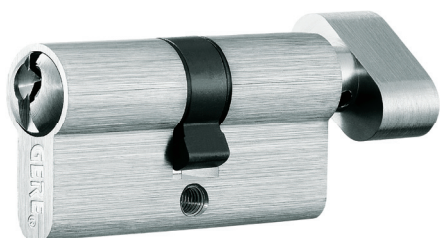
# Cylinder



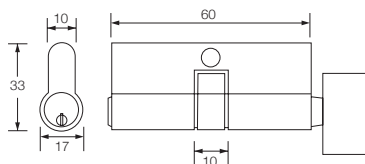
Model:  
**Cylinder With Thumb Turn**

## GC601S

Entrance



### Diagram



### Specification

- One side locking function
- One side thumb turn
- Dome head for easier key insertion and improved resistance against twisting the key
- Keyed alike/master keyed system available
- Brass Material

### Supplied With

- 1 Single profile cylinder with thumb turn
- 3 brass keys

### Finishing

- M5** - Antique Brass
- M11** - Antique Copper
- M26D** - Satin Chrome

Stock Code	Size	Packing	Weight
GC601S	60mm	40 pcs	11.5 kgs
GC701S	70mm	40 pcs	12 kgs
GC801S	80mm	40 pcs	14 kgs
GC901S	90mm	40 pcs	15 kgs
GC125S	125mm	30 pcs	19 kgs

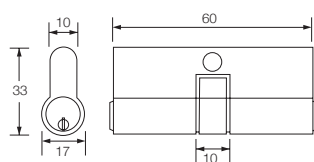
Model:  
**Double Keyed Cylinder**

## GC600D

Double Keyed



### Diagram



### Specification

- Double locking function
- Dome head for easier key insertion and improved resistance against twisting the key
- Keyed alike/master keyed system available
- Brass Material

### Supplied With

- 1 Double profile cylinder
- 3 brass keys

### Finishing

- M5** - Antique Brass
- M11** - Antique Copper
- M26D** - Satin Chrome

Stock Code	Size	Packing	Weight
GC500D	50mm	50 pcs	9 kgs
GC600D	60mm	50 pcs	10 kgs
GC700D	70mm	50 pcs	11.5 kgs
GC800D	80mm	50 pcs	12.6 kgs



SIRM  
CERTIFIED TO: ANSI/BHMA A 156.13:2005  
Certification No: PC000360

Certified to ANSI/BHMA A 156.13:2005  
Sirm approval, Grade 3.  
Exceeds 200,000 cycles. Certification No: PC000360  
**Packing** - Blister pack