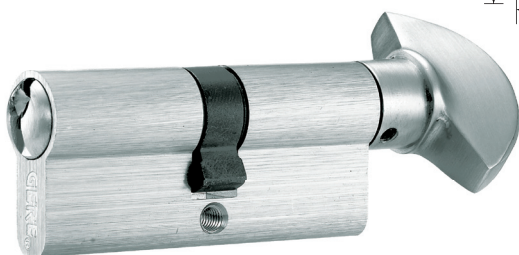


Cylinder

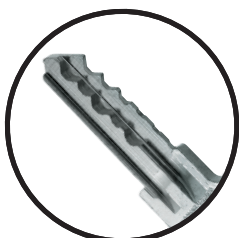
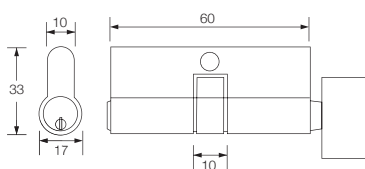


| | | | | | | | |
|----------------------|--|-------|--------|----|----|----|----|
| Standards & Testing | Certified to of ANSI/BHNA A 156.13:2005 requirements (SIRIM) MALAYSIA STANDARD | | | | | | |
| Materials & features | 50mm and longer, 5 pin as standard, 6 pin a 12 pin optional | | | | | | |
| | Base Material : Brass | | | | | | |
| Finish | 3 brass keys, Standard for non-masterkeyed system | | | | | | |
| | Satin Nickel Plated, Antique Brass, Antique Copper | | | | | | |
| Dimensions (mm) | Function | Type | Length | | | | |
| | Double Cylinder | GC600 | 50 | 60 | 70 | 80 | 90 |
| | Single Cylinder with Turn | GC601 | 60 | 70 | 80 | 90 | 90 |
| | Bathroom Cylinder | GC602 | 60 | | | | |

Model:
Cylinder With Thumb Turn
GC70110S



Diagram



Specification

- Dome head for easier key insertion and improved resistance against twisting the key
- 10 pins double keyway
- Thumb turn design provides an easy grip
- Single / double keyed profile cylinder available
- Brass profile cylinder
- Keyed alike / master keyed system available
- Double cylinder available

Supplied With

- 1 Single profile cylinder with thumb turn
- 5 Brass Keys

Finishing

- M5** - Antique Brass
- M11** - Antique Copper
- M26D** - Satin Chrome

| Stock Code | Size | Packing | Weight |
|------------|------|---------|----------|
| GC60010D | 60mm | 50 pcs | 16.2kgs |
| GC60110S | 60mm | 50 pcs | 20.5 kgs |
| GC70010D | 70mm | 50 pcs | 17.5 kgs |
| GC70110S | 70mm | 50 pcs | 22 kgs |



CERTIFIED TO: ANSI/BHMA A 156.13:2005
 Certification No: PC000360

Certified to ANSI/BHMA A 156.13:2005
 Sirim approval, Grade 3.
 Exceeds 200,000 cycles. Certification No: PC000360
Packing - Blister pack