

# Tubular Function Handle Set



Model:

## GD 3088

Zinc Alloy Handle set



### Specification

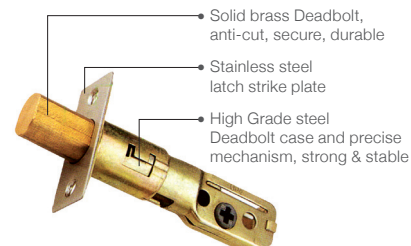
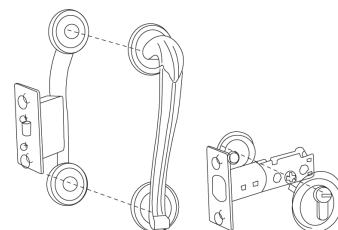
- Handle material: Zinc Alloy
- Lock faceplate material: Zinc Alloy
- Lock body: 60/70mm Adjustable Latch
- SUS 304 Ball catch
- Key: 3 Brass Keys
- Door thickness: 38-50mm
- Application range: Suitable for various kinds of wooden doors

### Finishing

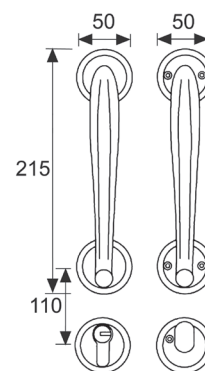
M26D - Satin chrome

### Function

- Entrance



### Diagram



CERTIFIED TO: ANSI/BHMA A 156.2:2003  
Certification No: PC000359

Meets underwriter's laboratories criteria.  
Specially designed for barrier free application.  
Certified to ANSI/BHMA A 156.2:2003 Sirim approval, Grade 3.  
Exceeds 200,000 cycles. Certification No: PC000359

**Packing** - Visual box pack

Stock Code	Packing	Weight
GD 3088	9 sets	16 kgs