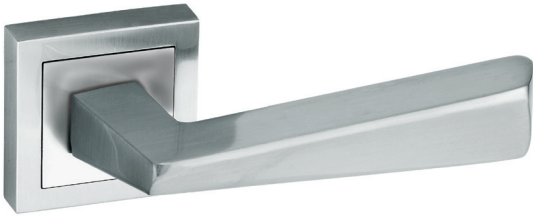


# Zinc Alloy Lever Handle

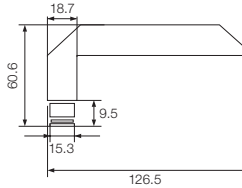


Model:

## G 008



### Diagram



### Specification

- Concealed mounting screw
- Individual spring on each rose plate to prevent lever sag, maintain reliability
- Panic exit function available
- Door thickness: 35-45mm
- Key: 3 Brass Keys
- Material: Zinc Alloy
- Completely reversible

### Finishing

**M26D** - Satin Chrome

### Function

- Entrance
- Privacy
- Passage

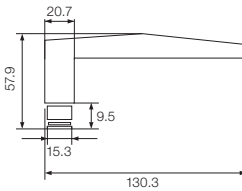


Model:

## G 153



### Diagram

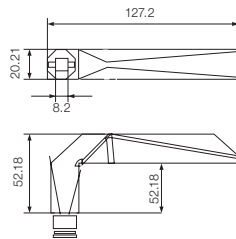


Model:

## G 154



### Diagram



SIRIM  
CERTIFIED TO: ANSI/BHMA A 156.13:2005  
Certification No: PC000360

Meets underwriter's laboratories criteria.  
Meets ADA requirements.  
Specially designed for barrier free application.  
Certified to ANSI/BHMA A 156.13:2005 Sirim approval, Grade 3.  
Exceeds 200,000 cycles. Certification No: PC000360

**Packing** - Blister pack

Stock Code	Packing	Weight
G 008	20 pairs	24.7 kg
G 153	20 pairs	23.3 kg
G 154	20 pairs	22.9 kg