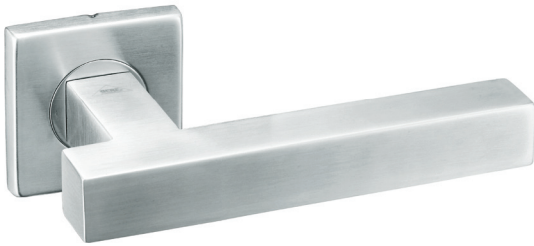


# Stainless Steel 304 Hollow Lever Handle

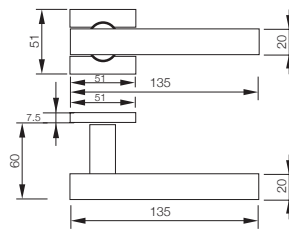


Model:

## G 148



### Diagram



### Specification

- Concealed mounting screw
- Individual spring on each rose plate to prevent lever sag, maintain reliability
- Panic exit function available
- Door thickness: 35-45mm
- Key: 3 Brass Keys
- Material: SUS 304 grade
- Completely reversible

### Finishing

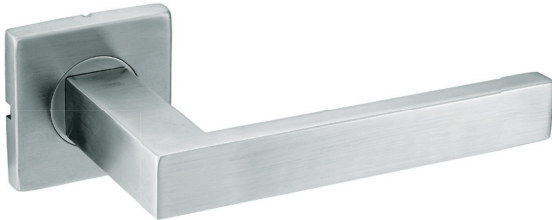
**M26D** - Satin Chrome

### Function

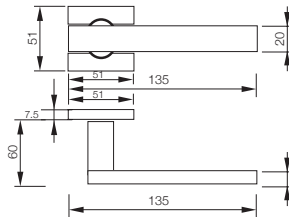
- Entrance
- Privacy
- Passage

Model:

## G 149



### Diagram

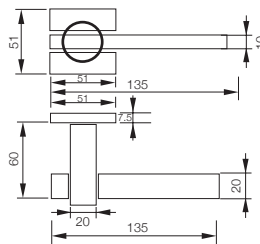


Model:

## G 151



### Diagram



SIRIM  
CERTIFIED TO: ANSI/BHMA A 156.13:2005  
Certification No: PC000360

Meets underwriter's laboratories criteria.  
Meets ADA requirements.  
Specially designed for barrier free application.  
Certified to ANSI/BHMA A 156.13:2005 Sirim approval, Grade 3.  
Exceeds 200,000 cycles. Certification No: PC000360

**Packing** - Box pack

Stock Code	Packing	G Weight	N Weight
G 148	20 pairs	13 kg	12 kg
G 149	20 pairs	13 kg	12 kg
G 151	20 pairs	15 kg	14 kg