

Mortise Function Lever Set

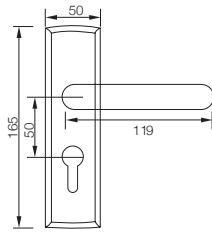


Model:

GS 7711



Diagram



Specification

- Suitable for exterior and interior wooden door / Iron Grill
- Handle material: zinc alloy
- Key: 3 Brass Keys
- Door thickness: 32-45mm
- Mortise lock case: 45x50mm
- Completely reversible

Finishing

- M5** - Antique Brass
- M26D** - Satin Chrome

Function

- Entrance
- Privacy

Mortise Lock Case

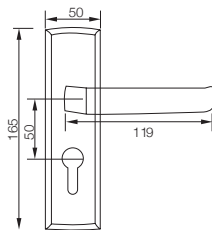


Model:

GS 7721



Diagram



Cylinder (Double Keyed)

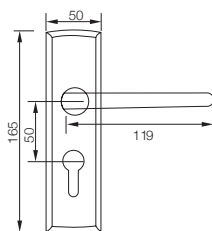


Model:

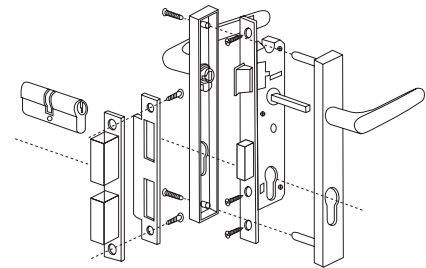
GS 7731



Diagram



Installation



SIRIM
CERTIFIED TO: ANSI/BHMA A 156.13:2005
Certification No: PC000360

Certified to ANSI/BHMA A 156.13:2005 Sirim approval, Grade 3.
Exceeds 200,000 cycles. Certification No: PC000360

Packing - Box pack

Stock Code	Packing	Weight
GS 7711	12 sets	17.5 kgs
GS 7721	12 sets	17.5 kgs
GS 7731	12 sets	17.5 kgs