

Padlock

Model:

CL 54

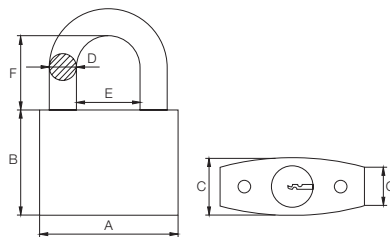
Solid Brass Padlock



Specification

- Hardened steel shackle
- SUS stainless steel spring
- Solid brass body
- 3 Brass keys
- Solid brass cylinder
- 'Snap Shut' function
- Rekeyable
- Keyed alike set of 2 pcs/set up to 6 pcs is standard
- Keyed-Alike master keyed is available upon request
- Carded blister pack

Diagram



Size mm	A	B	C	D	E	F	G
15mm	15	18	9.5	3	8	10.5	6.5
20mm	20	20	10	3	10.5	12.5	5.6
25mm	25	24	11	4	13.5	15.5	6
30mm	30	28	13	5	15.5	17.5	8
30mmL	30	28	13	5	15.5	49	8
40mm	40	33	14	6.5	22	24	8.5
40mmL	40	33	14	6.5	22	64	8.5
50mm	50	40	16	8	28	30	9.5
50mmL	50	40	16	8	28	80	9.5
60mm	60	42	18	9.5	33.5	35.5	10.7

(L - Long Shackle)

Stock Code	Size	Packing	Weight
CL 54 15	15 mm	144pcs	8 kgs
CL 54 20	20 mm	144pcs	10 kgs
CL 54 25	25 mm	144pcs	12 kgs
CL 54 30	30 mm	144pcs	17 kgs
CL 54 40	40 mm	96pcs	17 kgs
CL 54 50	50 mm	72pcs	21 kgs
CL 54 60	60 mm	48pcs	20 kgs
CL 54 30L	30 mm	96pcs	12.5 kgs
CL 54 40L	40 mm	72pcs	15.5 kgs
CL 54 50L	50 mm	48pcs	16 kgs



SIRM
CERTIFIED TO: BS EN 12320:2012 Grade 2
Certification No: PC000683

Exceeds
10,000 cycles

Model:

CL 55

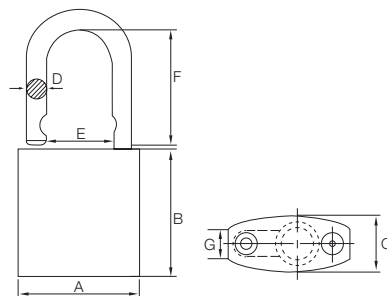
SUS 304 stainless steel
Pad Lock
(changeable cylinder)



Specification

- SUS 304 stainless steel shackle
- SUS 304 stainless steel bearing
- SUS 304 stainless steel body
- Changeable Brass profile cylinder
- The profile cylinder of CL 55 fit most mortice Locks that use profile cylinder
- 3 Brass keys
- Dome head for easiser key insertion and improved resistance against twisting the key
- Key-Retaining function
- Keyed-Alike available upon request
- Standard pack Keyed-Alike set available 2pcs to 5pcs
- Double blister pack for single padlock
- Skin packed for Keyed-Alike set

Diagram



Size mm	A	B	C	D	E	F	G
45mm	46	49	22	8	30	52	12
55mm	50	52	24	10	32	56	14

Stock Code	Size	Packing	Weight
CL 55 45	45 mm	48 pcs	16 kgs
CL 55 55	55 mm	48 pcs	20 kgs



SIRM
CERTIFIED TO: BS EN 12320:2012 Grade 3
Certification No: PC000683

Exceeds
10,000 cycles